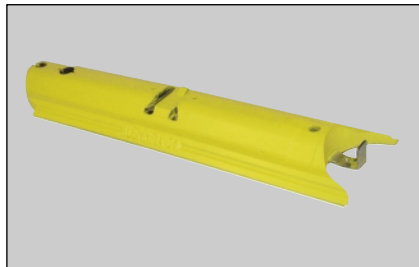


# Portable Guide Curb



The portable guide curb is made from recycled materials. Its excellent day and night visibility and positional stability – given by the anti-slide-system (ASS) at the bottom of the curb – are an important contribution for more passive safety for highly frequented highways. The reflective arch with cat's eyes, which is put on each curb element clearly shows the shape of curb. Thus the curb can quickly be identified as a median barrier. Each curb element is equipped with an insert for the reboundable Leitboy panels, which return to their original upright position after an impact. They give the following motorist safety as they do not fly away, but firmly remain on the curb.

The reboundable Leitboy delineators are available in different sizes, showing excellent results in increasing visibility. They are also equipped with a protection edge for the sheeting. The integrated safety screw creates a frictional connection among each single component part. In addition the built-in hook is giving the system a solid connection. There is no need to adhere the curb to the road. These outstanding features make the KLEMMFIX portable guide curb system unique – offering an innovative and practical solution for almost any application at an inexpensive cost.



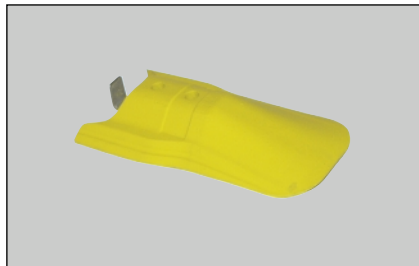
## Portable Guide Curb LN60 with ASS

and integrated safety screw L66, with hook, yellow (without cat's eyes reflector)

Art.-No. Package  
**25581** **50**

measur. (LxWxH):	1,000 x 270 x 90mm
weight:	approx. 16 kg
material:	Recycling

**BAST-certified according to TL Leitelemente / No. 94 5 S 001/LU**



## Female end piece A LN61 with ASS

without safety screw L66, with hook, yellow

Art.-No. Package  
**25582** **1**

measur. (LxW):	440 x 270mm
weight:	approx. 5.6 kg
material:	Recycling

**BAST-certified according to TL Leitelemente / No. 94 5 S 001/LU**



## Male end piece B LN62 with ASS

with safety screw L66, without hook, yellow

Art.-No. Package  
**25583** **1**

measur. (LxW):	480 x 270mm
weight:	approx. 5.3 kg
material:	Recycling

**BAST-certified according to TL Leitelemente / No. 94 5 S 001/LU**



## Cat's eyes reflector L65

yellow, with 14 yellow cat's eyes

Art.-No. Package  
**25584** **50**

measur. (LxWxH):	180 x 56 x 60mm
weight:	approx. 0.150 kg
material:	plastic

**BAST-certified / No. 3194**



## Lifting tool L64

for guide curb

Art.-No. Package

**25585** 1

measur. (L):	620mm
	Ø 56mm
weight:	approx. 0.150 kg
material:	plastic



## Leitboy I

with flexible rubber adapter, with handle, sheeting type II

Art.-No. Package

**25590/1** 10

**L42RL, right-/leftshowing**

**25591/1** 10

**L42RR, right-/rightshowing**

**25588/1** 10

**L42L, leftshowing**

**25589/1** 10

**L42R, rightshowing**

measur. (HxW) kpl.:	570 x 180mm
measur. (HxW) sheeting:	290 x 135mm
weight:	approx. 1.65 kg
material:	plastic



## Leitboy II

with flexible rubber adapter, with handle, sheeting type II

Art.-No. Package

**25590/2** 10

**L72RL, right-/leftshowing**

**25591/2** 10

**L72RR, right-/rightshowing**

**25588/2** 10

**L72L, leftshowing**

**25589/2** 10

**L72R, rightshowing**

measur. (HxW) kpl.:	760 x 215mm
measur. (HxW) sheeting:	500 x 7.5mm
weight:	approx. 1.7 kg
material:	plastic



## Leitboy III

with flexible rubber adapter, with handle, sheeting type II

Art.-No. Package

**25619RL** 10

**L82RL, right-/leftshowing**

**25619RR** 10

**L82RR, right-/rightshowing**

**25607** 10

**L82L, leftshowing**

**25608R** 10

**L82R, rightshowing**

measur. (HxW) kpl.:	730 x 155mm
measur. (HxW) sheeting:	500 x 125mm
weight:	approx. 1 kg
material:	plastic

**BASSt-certified according to  
TL Leitelemente / No. 94 5 S 001/LU**